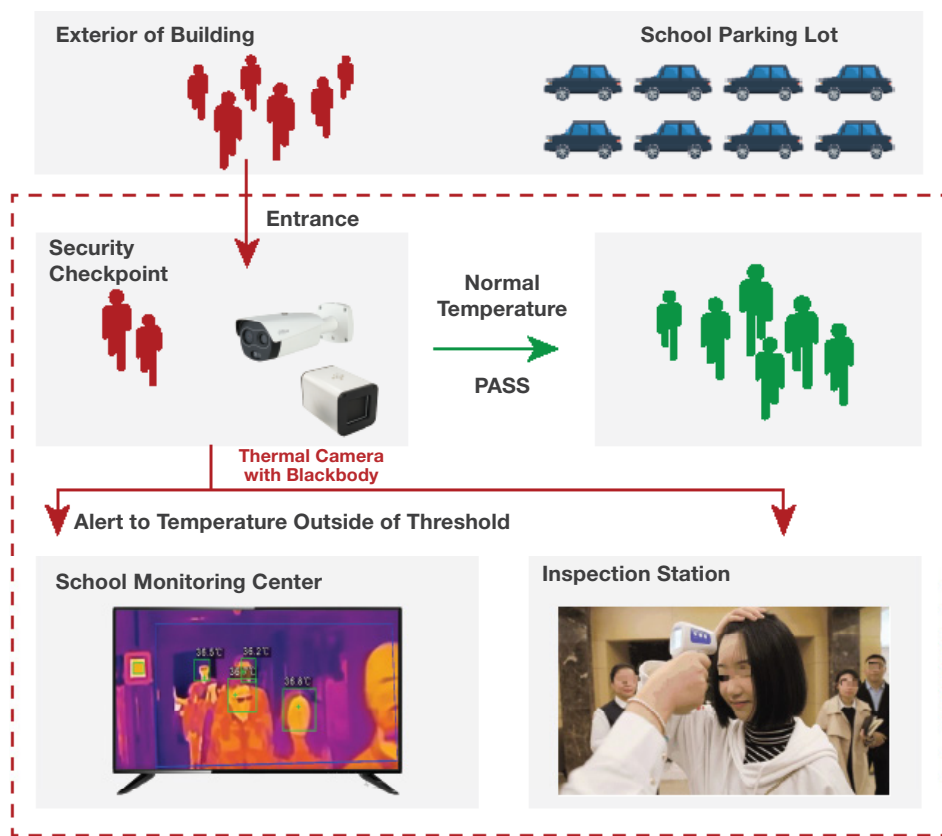


Thermal Temperature Monitoring for Education

Highlights:

Schools have a high population density, with a large amount of students and teachers. The temperature monitoring solution can provide a time-efficient way to assess potential high temperatures of large groups of people without personal contact.

Monitoring Process:



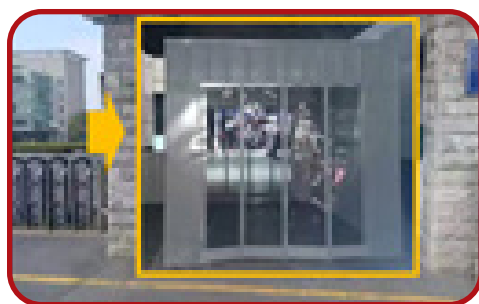
Pain Points:

- Monitoring the temperature of everyone individually is time consuming

Key Benefits:

- Set a threshold for temperature assessments and receive alerts automatically
- Monitor up to 30 people simultaneously

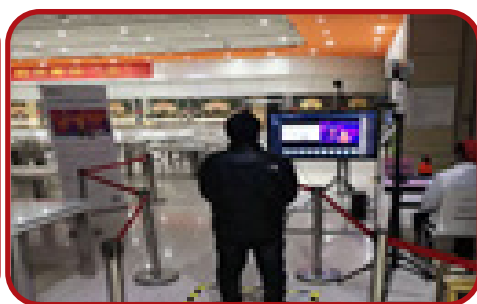
Scenario:



School Entrance



Dorm Entrance



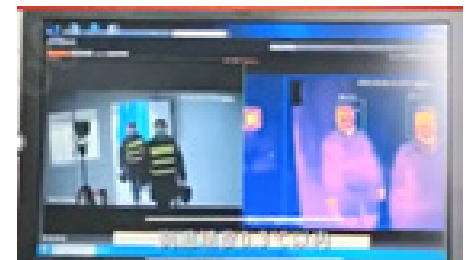
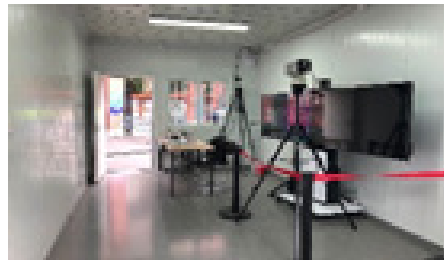
Dining Hall

Entrance

Temperature Monitoring Area



Success Cases: Fudan University, China



Success Cases: Thailand International Harrow School



Thermal Products



DH-TPC-BF5421-T
Hybrid thermal camera



JQ-D70Z
Blackbody Temperature Calibration Device



DHI-NVR5216-16P-I 4TB
16-Channel 1 U 16 PoE NVR

Accessories



Camera PSU
DH-PFM320D-USDC12V 2A
DH-PFM321D-USDC12V 1A



RQW026-00
Connector (x2)



DHL43-F600
Monitor (x1)



VCT-999
Tripod (x2)

The Dahua Thermal Temperature Monitoring Solution is not FDA-cleared or approved. The Solution should not be solely or primarily used to diagnose or exclude a diagnosis of COVID-19 or any other disease. Elevated body temperature should be confirmed with secondary evaluation methods (e.g., an NCIT or clinical grade contact thermometer). Users, through their experience with the Solution in the particular environment of use, should determine the significance of any fever or elevated temperature based on the skin telethermographic temperature measurement. Visible thermal patterns are only intended for locating the points from which to extract the thermal measurement.