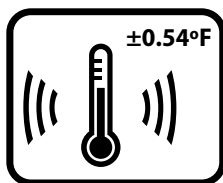


# Thermal Temperature Monitoring for Retail

## Highlights:

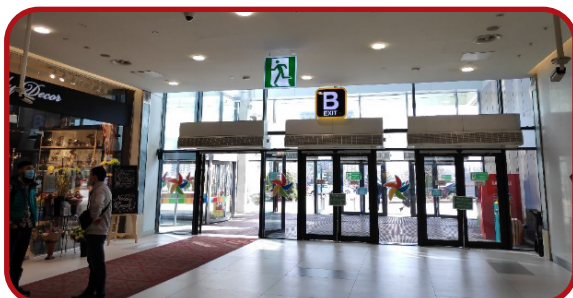
Secure, Faster, Better Shopping Experience.



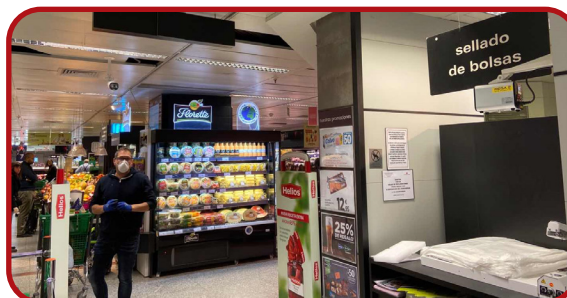
## Key Benefits:

Alert retail staff if any temperature readings exceed user-defined threshold. Limit access to the store to only individuals below the threshold.

## Scenario:

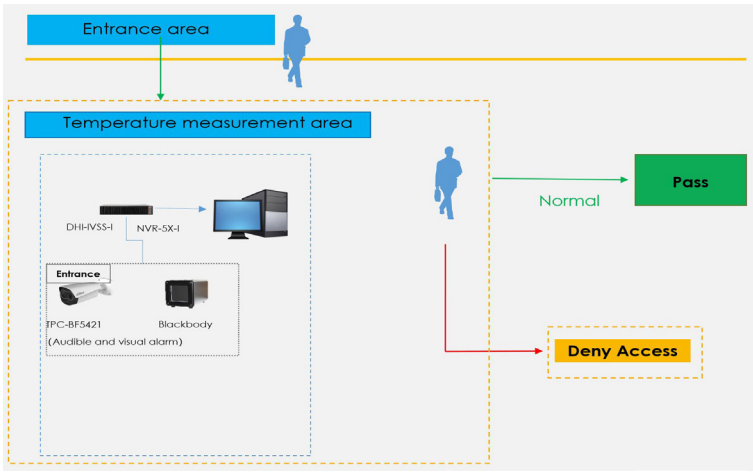


Shopping Mall Entrance

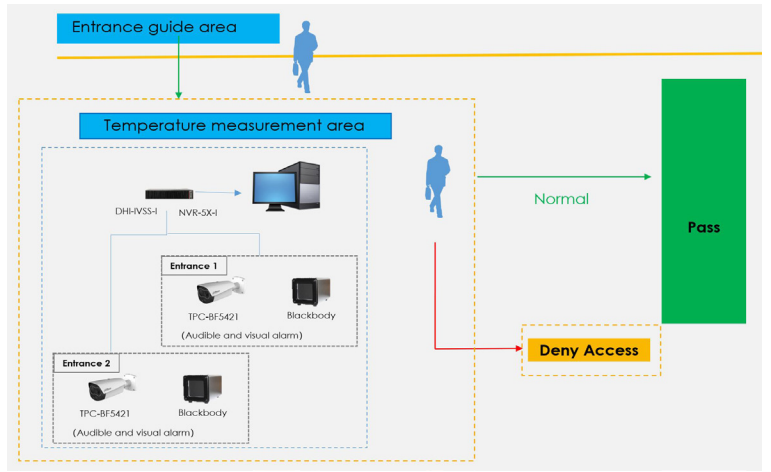


Supermarket Entrance

## For Single Entrance Scenario (Supermarket)



## For Multi-Entrance Scenario (Shopping Mall)



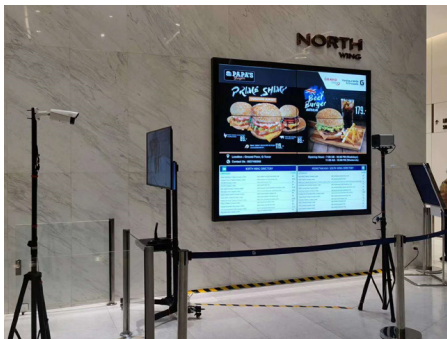
### Success Cases: Supermarket

Dahua's thermal temperature monitoring solution was deployed at the entrance of the supermarket to detect the temperature of entering personnel. A Blackbody device and thermal camera with high-precision accuracy helped to guarantee only staff and customers with a body temperature below a user-defined threshold could enter the store.



### Success Cases: Shopping Mall

Dahua's thermal temperature monitoring solution was deployed at the entrance of the mall to help retailers obtain fast and contactless temperature measurement of mall visitors to monitor for high temperatures and create a better shopping experience.



#### Thermal Products



**DH-TPC-BF542I-T**  
Hybrid thermal camera



**JQ-D70Z**  
Blackbody Temperature Calibration Device



**DHI-NVR5216-16P-I 4TB**  
16-Channel 1 U 16 PoE NVR

#### Accessories



**Camera PSU**  
DH-PFM320D-USDC12V 2A  
DH-PFM321D-USDC12V 1A



**RQW026-00**  
Connector (x2)



**DHL43-F600**  
Monitor (x1)



**VCT-999**  
Tripod (x2)

The Dahua Thermal Temperature Monitoring Solution is not FDA-cleared or approved. The Solution should not be solely or primarily used to diagnose or exclude a diagnosis of COVID-19 or any other disease. Elevated body temperature should be confirmed with secondary evaluation methods (e.g., an NCIT or clinical grade contact thermometer). Users, through their experience with the Solution in the particular environment of use, should determine the significance of any fever or elevated temperature based on the skin telethermographic temperature measurement. Visible thermal patterns are only intended for locating the points from which to extract the thermal measurement.

**Dahua Technology USA Inc.**

23 Hubble, Irvine CA. 92618 USA | Ph: (949) 679-7777

© 2020 Dahua Technology. All rights reserved. Product design and specifications are subject to change without notice. April 2020

